

What will be on the actual ballot?

IMPORTANT INFORMATION...



FLIP THE BALLOT:

Both referendum questions will be on the back of the ballot.

SCHOOL DISTRICT OF
REEDSBURG
CENTRAL OFFICE BUILDING
501 K Street, Reedsburg, WI 53959

NON PROFIT ORG
U.S. POSTAGE
PAID
Permit No. 9
Reedsburg, WI

SCHOOL DISTRICT OF
REEDSBURG

PURSUIT OF EXCELLENCE

2024 REFERENDUM

1

QUESTION ONE

Operating Funds:

SAMPLE

Shall the School District of Reedsburg, Sauk and Juneau Counties, Wisconsin be authorized to exceed the revenue limit specified in Section 121.91, Wisconsin Statutes, by \$4,000,000 per year for four years, beginning with the 2024-2025 school year and ending with the 2027-2028 school year, for non-recurring purposes consisting of operational and capital maintenance expenses?

Yes No

2

QUESTION TWO

Facilities Project:

SAMPLE

Shall the School District of Reedsburg, Sauk and Juneau Counties, Wisconsin be authorized to issue pursuant to Chapter 67 of the Wisconsin Statutes, general obligation bonds in an amount not to exceed \$14,000,000 for the public purpose of paying the cost of a school improvement project at the High School consisting of: construction of an addition and renovations for construction trades, manufacturing, engineering, agriculture and other classroom areas; capital maintenance, systems and site improvements; and acquisition of furnishings, fixtures and equipment?

Yes No



Understanding the Why?

Like many Wisconsin school districts, the School District of Reedsburg does not receive adequate funding from the state to keep pace with inflationary increases. Added operating funds will allow the District to continue on its upward trajectory. Renovated Career & Technical Education spaces at RAHS will allow the District to continue to build rigorous career pathways and academic programs for ALL students.



JOIN US:

Referendum Information Sessions

Tour Reedsburg Area High School and visit with District staff and partners EUA and Kraemer Brothers to learn more about the Referendum questions.

» Wednesday, October 9

» Tuesday, October 15

6:30-7:30 p.m. at Reedsburg Area High School

Learn More:

www.rsd.k12.wi.us/district/referendum-2024.cfm

For Questions, please call (608) 524-2016 or email referendum@rsd.k12.wi.us.



SCAN QR CODE to access Referendum website



TEST SCORES INCREASE SINCE 2021

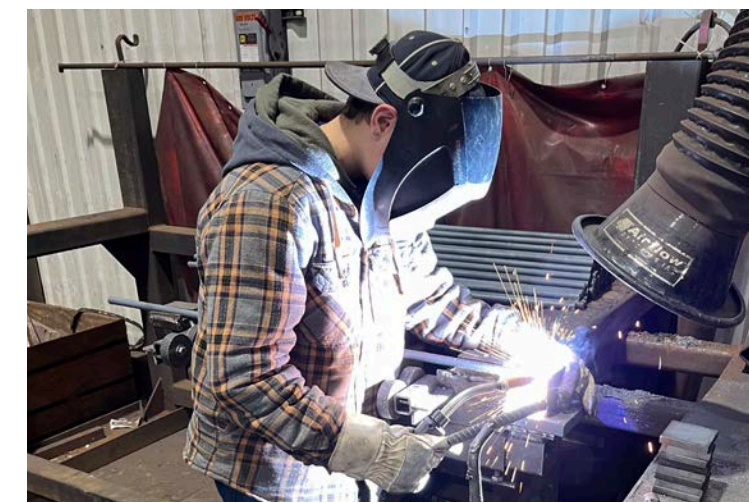
20% INCREASE

Grade 4-8 – Math
Wisconsin Forward Exam

14% INCREASE

Grade 4-8 – Reading
Wisconsin Forward Exam

71% – RAHS students passed AP Exams
[Highest pass rate ever]



36 STUDENTS

were involved in formal Youth Apprenticeships in 2023-24, the most ever at RAHS

CAREER READINESS

RAHS will offer 7 New Career Pathways and class offerings



Message from Superintendent Rindo

Dear Reedsburg Community Member,

The School District of Reedsburg has two referendum questions for you to consider on the November 5th election ballot. The purpose of this newsletter is to provide you as much information as possible on these questions.

The first is a non-recurring operational question that, if approved, would allow the District to exceed our revenue limit by \$4 million per year for the next four years. Like many Wisconsin school districts, the School District of Reedsburg does not receive adequate funding from the state to keep pace with inflationary increases. **This funding challenge is real. Reedsburg is joined by 79 other school districts across the state on November 5th who are also asking their communities to allow them to exceed their revenue limits.** The additional operating funds will help our district address projected budget deficits over those years, help us continue on our current trajectory, and address the most urgent maintenance needs at Webb Middle School.

The second question asks the community to consider a \$14 million dollar capital project at Reedsburg Area High School. Those dollars would allow the District to renovate and modernize our Career and Technical Education spaces and would allow the District to continue to build rigorous career pathways and academic programs for ALL students.

I continue to believe that great schools and healthy, vibrant communities are inextricably linked. You simply can't have one without the other. Our community and our school district are on the rise, and we are proud to be a part of that energy as we continue working to provide a world-class education to all students at all levels, inspiring creativity, innovation, and a desire to achieve greatness.

Thank you for considering these two important questions!

Go Beavers!



VOTER INFORMATION

Visit www.myvote.wi.gov to find your polling place, request an absentee ballot, and find out more about voter registration and photo identification requirements.



How do the referendum questions support students?



1 QUESTION ONE Operating Funds:

Exceed the revenue limit by \$4 million per year for the next four years (non-recurring), ending with the 2027-2028 school year, for the purpose of:

- » Filling projected budget deficits in each of the four years as a result of shortfalls in state funding;
- » Maintaining and expanding on our current focus to provide rigorous academic programs and career pathways for all students;
- » Keeping class sizes as low as possible;
- » Continuing to attract and retain high-quality staff;

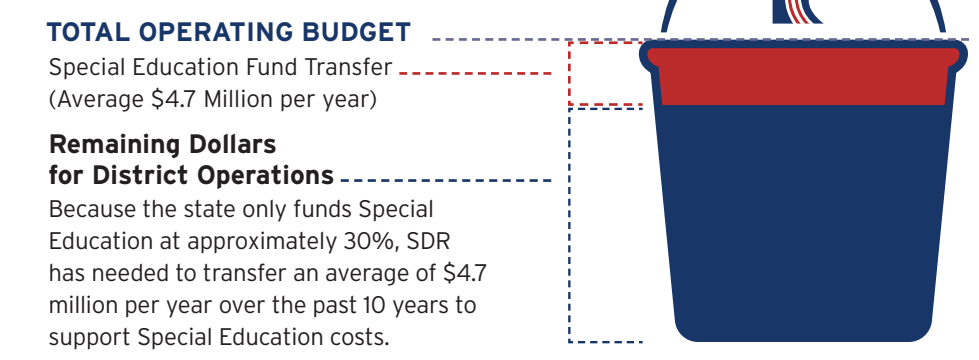
» Addressing the most urgent maintenance needs at Webb Middle School.

The District would use some of this revenue increase to address the most critical needs at Webb Middle School, with the understanding that this building would remain in operation for the near future. That could include, but is not limited to:

- » Roof patching and preventative roof maintenance;
- » Increased maintenance of existing HVAC and Mechanical/Electrical/Plumbing systems;
- » Increasing ADA accessibility in restrooms;
- » New cafeteria tables and flexible furniture to support modern learning environments and our inclusive practices work;
- » New playground equipment.



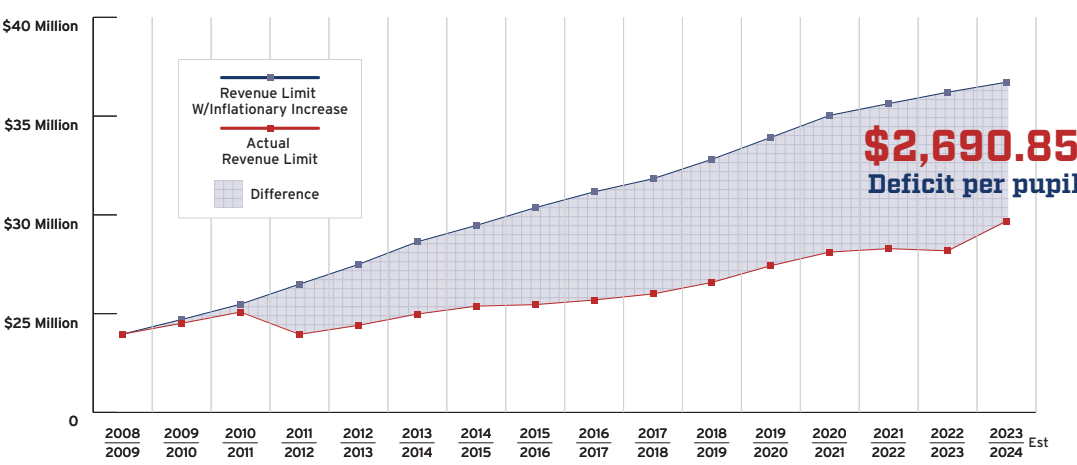
» Reedsburg Operating Budget



» Recent Budget Deficit Reduction Efforts

- » Changed health insurance carriers, made plan design changes, and added a Qualified High Deductible plan as a health insurance option
- » Reduced the number of ESSER-funded positions through attrition to adjust for the planned loss of ESSER funding
- » Closed Ironton-LaValle and Loganville elementary schools to reduce long-term operating costs in 2022
- » Reduction in Staff; 1 administrative, 13 teaching positions, 1 maintenance, two part-time custodial and 2 part-time clerical positions
- » Maximized Special Education funding
- » Paid off existing debt early resulting in net interest cost savings of \$3,346,708 and the removal of \$8,025,000 of principal from outstanding debt total

» Actual Revenue Limits vs Revenue Limits w/Inflationary Increases



2 QUESTION TWO Facilities Project:

Invest \$14 million in the Reedsburg Area High School to:

- » Renovate and update equipment in the Construction Trades, Manufacturing and Engineering, and Agriculture spaces;
- » Add a new greenhouse and provide space for new and innovative programs in Agriculture, Animal Science, and Natural Resources;
- » Renovate the library, large group room, and two adjacent classrooms to create the new Center for Innovation and Entrepreneurship;
- » Lightly renovate the cafeteria / commons.

Supporting Career Pathways:

The renovations and added space at RAHS are directly connected to the District's instructional programming and strategic goal to develop new and updated career pathways connected to work-based learning experiences for our students in the following areas:

- » Agriculture
- » Animal Science
- » Business & Marketing
- » Construction Trades
- » Engineering
- » Manufacturing
- » Natural Resources

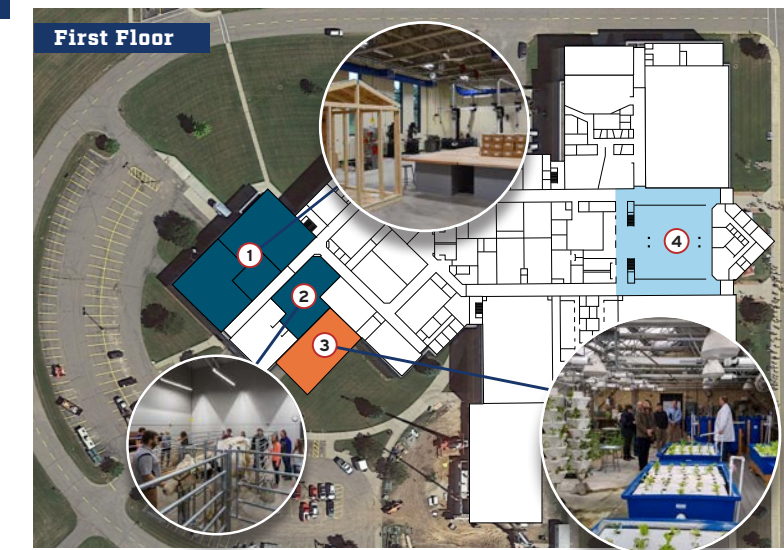
"The U.S. skilled labor market is facing record-high pressure, particularly for companies with manufacturing and construction operations. Increasing scarcity has intensified competition for talent, raising the sectors' average wages by more than 20 percent since 2020."

- McKinsey & Company, April 9, 2024

SAUK COUNTY PROJECTS 6,726 NEW CONSTRUCTION & MANUFACTURING JOBS BY 2030

Data from the Sauk County 2023 Workforce Profile

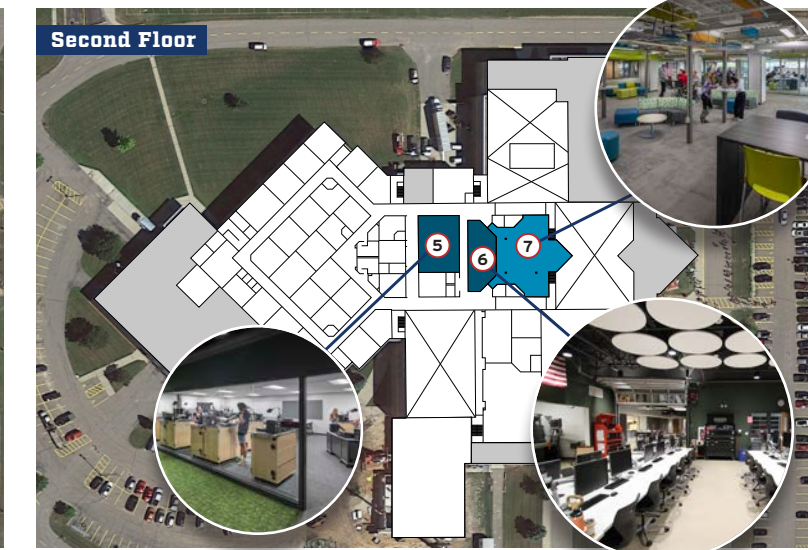
Proposed Renovations for Construction Trades, Manufacturing, Engineering, & Agriculture spaces
- Estimated Completion Date September 2026



Legend:
 ■ New Construction
 ■ Heavy Remodeling
 ■ Medium Remodeling
 ■ Light Remodeling

Key:
 1 Improve the existing Construction, Manufacturing, & Engineering classrooms/labs
 2 Update the existing Agriculture classroom/lab
 3 Construct an Agriculture lab & new greenhouse
 4 Update & modernize the cafeteria/commons
 5 Fabrication Lab
 6 Design / Innovation Lab
 7 Collaboration Lab

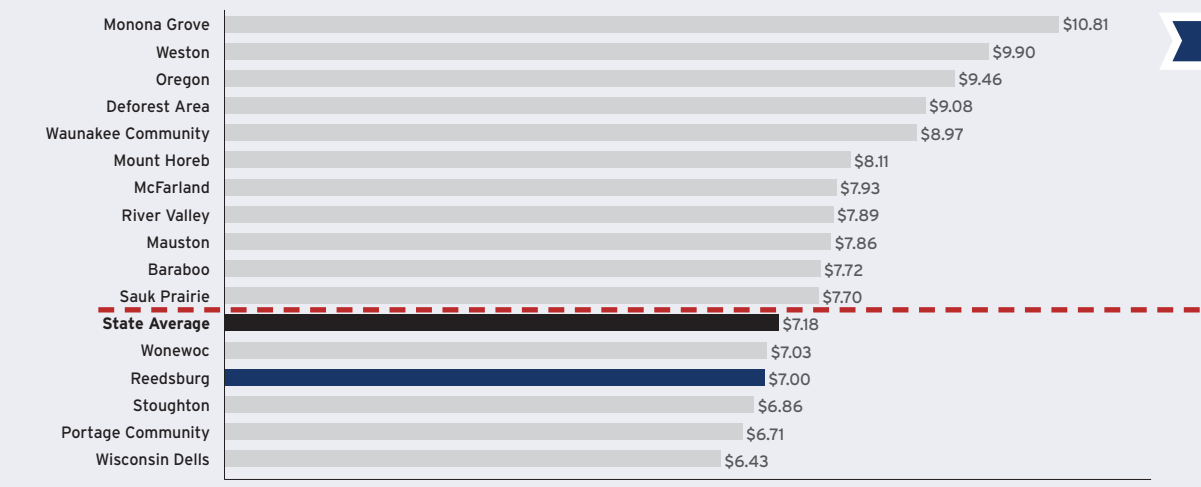
Proposed Renovations for Center for Innovation & Entrepreneurship
- Estimated Completion Date September 2025



NOTE: Site plans are preliminary and photos are only representative at this time. Final design will evolve pending a successful referendum.

» Understanding the Costs

» 2023-2024 Mill Rate Comparison



The estimated mill rate for 2024-2025 if both questions are approved is **\$7.35**

» Estimated Tax Impact

The estimated tax impact for both referendum questions combined is an increase of \$.35 cents per \$1,000 dollars of property value.

The projected 2024-25 tax rate with both questions approved is estimated to increase from \$7.00 to \$7.35. The District will maintain this rate by adjusting its early payments on existing debt.

Equalized Property Value	Annual Impact*	Monthly Impact
\$100,000	\$35.00	\$2.92
\$250,000	\$87.50	\$7.30
\$350,000	\$122.50	\$10.21
\$450,000	\$157.50	\$13.13

*\$.35 per \$1,000 of property value. The estimated tax rate increase is based on an estimated 9% increase in property values in 2024. Question #2 is a debt issuance, with the borrowing estimated to be repaid over 20 years at a conservative interest rate of 5.00%.